

SCAN HERE TO VISIT



OUR WEBSITE

BURKE EQUIPMENT COMPANY

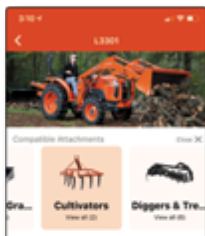
Turning the earth into a better place

WELCOME SPRING!

SHOP TAX-FREE DELAWARE!



Check out the
myKubota App!



Scan here to download now!

iPhone



Android



Ranked #8 Among All Kubota Construction Dealers In The Country!



Kubota®

ZERO-TURNS



75742 TIMECUTTER

- 42" STAMPED DECK
- 22.5 HP TORO ENGINE

**STARTING AT \$63.32/Mo¹
OR SAVE UP TO \$300²**



75746 TIMECUTTER

- 42" FABRICATED DECK
- 22 HP KOHLER ENGINE

**STARTING AT \$63.32/Mo³
OR SAVE UP TO \$250⁴**



75747 TIMECUTTER MYRIDE

- 42" FABRICATED DECK
- 22 HP KOHLER ENGINE

**STARTING AT \$76.65/Mo⁵
OR SAVE UP TO \$200⁶**



75750 TIMECUTTER

- 50" FABRICATED DECK
- 23 HP KAWASAKI ENG

**STARTING AT \$66.65/Mo⁷
OR SAVE UP TO \$900⁸**



75755 TIMECUTTER MYRIDE

- 50" FABRICATED DECK 24
- 24.5 HP TORO ENG

**STARTING AT \$74.15/Mo⁹
OR SAVE UP TO \$800¹⁰**



75756 TIMECUTTER MYRIDE

- 54" FABRICATED DECK
- 24 HP KOHLER ENGINE

**STARTING AT \$81.65/Mo¹¹
OR SAVE UP TO \$700¹²**

1. Payments of \$63.32 per month on new Toro 75742 Timecutter 42" based on sales price of \$3,699.00 at \$0 down, 0% A.P.R. for 60 months. Financing available from Sheffield Financial, a division of Truist Bank, member FDIC. Subject to credit approval. Approval, and any rates and terms provided, are based on credit worthiness. Payments do not include implements, freight, delivery, or taxes where applicable. Some exceptions apply. Offer expires 4/30/24. See dealership for details. Dealer Participation Required. 2. Discount of \$300 on new Toro 75742 Timecutter 42" based on cash sales price of \$3,399. Discount may not be used in conjunction with financing offers. Prices and availability subject to change without notice. See dealer for details. 3. Payments of \$63.32 per month on new Toro 75746 Timecutter 42" based on sales price of \$3,699.00 at \$0 down, 0% A.P.R. for 60 months. Financing available from Sheffield Financial, a division of Truist Bank, member FDIC. Subject to credit approval. Approval, and any rates and terms provided, are based on credit worthiness. Payments do not include implements, freight, delivery, or taxes where applicable. Some exceptions apply. Offer expires 4/30/24. See dealership for details. Dealer Participation Required. 4. Discount of \$250 on new Toro 75746 Timecutter 42" based on cash sales price of \$3,449. Discount may not be used in conjunction with financing offers. Prices and availability subject to change without notice. See dealer for details. 5. Payments of \$76.65 per month on new Toro 75747 Timecutter MyRide 42" based on sales price of \$4,499.00 at \$0 down, 0% A.P.R. for 60 months. Financing available from Sheffield Financial, a division of Truist Bank, member FDIC. Subject to credit approval. Approval, and any rates and terms provided, are based on credit worthiness. Payments do not include implements, freight, delivery, or taxes where applicable. Some exceptions apply. Offer expires 4/30/24. See dealership for details. Dealer Participation Required. 6. Discount of \$200 on new Toro 75747 Timecutter MyRide 42" based on cash sales price of \$4,399. Discount may not be used in conjunction with financing offers. Prices and availability subject to change without notice. See dealer for details. 7. Payments of \$66.65 per month on new Toro 75750 Timecutter 50" based on sales price of \$3,899.00 at \$0 down, 0% A.P.R. for 60 months. Financing available from Sheffield Financial, a division of Truist Bank, member FDIC. Subject to credit approval. Approval, and any rates and terms provided, are based on credit worthiness. Payments do not include implements, freight, delivery, or taxes where applicable. Some exceptions apply. Offer expires 4/30/24. See dealership for details. Dealer Participation Required. 8. Discount of \$900 on new Toro 75750 Timecutter 50" based on cash sales price of \$3,399. Discount may not be used in conjunction with financing offers. Prices and availability subject to change without notice. See dealer for details. 9. Payments of \$74.15 per month on new Toro 75755 Timecutter MyRide 50" based on sales price of \$4,349.00 at \$0 down, 0% A.P.R. for 60 months. Financing available from Sheffield Financial, a division of Truist Bank, member FDIC. Subject to credit approval. Approval, and any rates and terms provided, are based on credit worthiness. Payments do not include implements, freight, delivery, or taxes where applicable. Some exceptions apply. Offer expires 4/30/24. See dealership for details. Dealer Participation Required. 10. Discount of \$800 on new Toro 75755 Timecutter MyRide 50" based on cash sales price of \$3,999. Discount may not be used in conjunction with financing offers. Prices and availability subject to change without notice. See dealer for details. 11. Payments of \$81.65 per month on new Toro 75756 Timecutter MyRide 54" based on sales price of \$4,799.00 at \$0 down, 0% A.P.R. for 60 months. Financing available from Sheffield Financial, a division of Truist Bank, member

TORO®

TORO®

ZERO-TURNS



75760 TIMECUTTER

- 60" FABRICATED DECK
- 24.5 HP TORO ENGINE

**STARTING AT \$84.31/Mo¹³
OR SAVE UP TO \$650¹⁴**



75763 TIMECUTTER HAVOC

- 60" FABRICATED DECK
- 24 HP V-TWIN KOHLER ENGINE

**STARTING AT \$94.98/Mo¹⁵
OR SAVE UP TO \$700¹⁶**



75305 TITAN

- 54" FABRICATED DECK
- 26 HP KOHLER ENGINE

**STARTING AT \$101.65/Mo¹⁷
OR SAVE UP TO \$700¹⁸**



75315 TITAN MYRIDE

- 54" FABRICATED DECK
- 26 HP KOHLER ENGINE

**STARTING AT \$109.98/Mo¹⁹
OR SAVE UP TO \$1,300²⁰**



75316 TITAN MYRIDE

- 60" FABRICATED DECK
- 26 HP KOHLER ENGINE

**STARTING AT \$119.98/Mo²¹
OR SAVE UP TO \$1,400²²**



21199 TIMEMASTER

- 30" DECK
- SELF-PROPELLED

ONLY \$1,399!

FDIC. Subject to credit approval. Approval, and any rates and terms provided, are based on credit worthiness. Payments do not include implements, freight, delivery, or taxes where applicable. Some exceptions apply. Offer expires 4/30/24. See dealership for details. Dealer Participation Required. 12. Discount of \$700 on new Toro 75760 Timecutter MyRide 54" based on cash sales price of \$4,299. Discount may not be used in conjunction with financing offers. Prices and availability subject to change without notice. See dealer for details. 13. Payments of \$84.31 per month on new Toro 75760 Timecutter 60" based on sales price of \$4,959.00 at \$0 down, 0% A.P.R. for 60 months. Financing available from Sheffield Financial, a division of Truist Bank, member FDIC. Subject to credit approval. Approval, and any rates and terms provided, are based on credit worthiness. Payments do not include implements, freight, delivery, or taxes where applicable. Some exceptions apply. Offer expires 4/30/24. See dealership for details. Dealer Participation Required. 14. Discount of \$650 on new Toro 75760 Timecutter 60" based on cash sales price of \$4,459. Discount may not be used in conjunction with financing offers. Prices and availability subject to change without notice. See dealer for details. 15. Payments of \$94.98 per month on new Toro 75763 Timecutter MyRide 60" based on sales price of \$5,599.00 at \$0 down, 0% A.P.R. for 60 months. Financing available from Sheffield Financial, a division of Truist Bank, member FDIC. Subject to credit approval. Approval, and any rates and terms provided, are based on credit worthiness. Payments do not include implements, freight, delivery, or taxes where applicable. Some exceptions apply. Offer expires 4/30/24. See dealership for details. Dealer Participation Required. 16. Discount of \$700 on new Toro 75763 Timecutter MyRide 60" based on cash sales price of \$5,199. Discount may not be used in conjunction with financing offers. Prices and availability subject to change without notice. See dealer for details. 17. Payments of \$101.65 per month on new Toro 75305 Titan 54" based on sales price of \$5,999.00 at \$0 down, 0% A.P.R. for 60 months. Financing available from Sheffield Financial, a division of Truist Bank, member FDIC. Subject to credit approval. Approval, and any rates and terms provided, are based on credit worthiness. Payments do not include implements, freight, delivery, or taxes where applicable. Some exceptions apply. Offer expires 4/30/24. See dealership for details. Dealer Participation Required. 18. Discount of \$700 on new Toro 75305 Titan 54" based on cash sales price of \$5,599. Discount may not be used in conjunction with financing offers. Prices and availability subject to change without notice. See dealer for details. 19. Payments of \$109.98 per month on new Toro 75315 Titan MyRide 54" based on sales price of \$6,499.00 at \$0 down, 0% A.P.R. for 60 months. Financing available from Sheffield Financial, a division of Truist Bank, member FDIC. Subject to credit approval. Approval, and any rates and terms provided, are based on credit worthiness. Payments do not include implements, freight, delivery, or taxes where applicable. Some exceptions apply. Offer expires 4/30/24. See dealership for details. Dealer Participation Required. 20. Discount of \$1,300 on new Toro 75315 Titan MyRide 54" based on cash sales price of \$5,999. Discount may not be used in conjunction with financing offers. Prices and availability subject to change without notice. See dealer for details. 21. Payments of \$119.98 per month on new Toro 75316 Titan MyRide 60" based on sales price of \$7,099.00 at \$0 down, 0% A.P.R. for 60 months. Financing available from Sheffield Financial, a division of Truist Bank, member FDIC. Subject to credit approval. Approval, and any rates and terms provided, are based on credit worthiness. Payments do not include implements, freight, delivery, or taxes where applicable. Some exceptions apply. Offer expires 4/30/24. See dealership for details. Dealer Participation Required. 22. Discount of \$1,400 on new Toro 75316 Titan MyRide 60" based on cash sales price of \$5,999. Discount may not be used in conjunction with financing offers. Prices and availability subject to change without notice. See dealer for details. **All finance rates and final pricing will be established at the time of delivery. KDM-24-150725-1

ZERO-TURNS



74002 ZMASTER 4000

- 52" TURBO FORCE® DECK
- 25.5 HP KAWASAKI® ENGINE
- 24" TURF TREAD DRIVE TIRES

**STARTING AT \$225.56/Mo¹
OR SAVE UP TO \$3,500²**



74004 ZMASTER 4000

- 60" TURBO FORCE® DECK
- 25.5 HP KAWASAKI® ENGINE
- 24" TURF TREAD DRIVE TIRES

**STARTING AT \$251.59/Mo³
OR SAVE UP TO \$3,000⁴**



74054 ZMASTER 4000

- 60" TURBO FORCE® DECK
- 25.5 HP KAWASAKI® ENGINE
- VOODOO TRAC™ TIRES

**STARTING AT \$223.39/Mo⁵
OR SAVE UP TO \$4,300⁶**



74020 ZMASTER 4000

- 60" TURBO FORCE® DECK
- 35 HP KAWASAKI® ENGINE
- 26" TURF TIRES

**STARTING AT \$260.27/Mo⁷
OR SAVE UP TO \$4,900⁸**



72911 ZMASTER 5000

- 60" TURBO FORCE® DECK
- 25 HP KOHLER® EFI ENGINE
- MICHELIN® X® TWEEL™ TIRES

**STARTING AT \$314.49/Mo⁹
OR SAVE UP TO \$6,000¹⁰**



72961 ZMASTER 6000

- 72" TURBO FORCE® DECK
- 31 HP KAWASAKI® ENGINE
- DELUXE SUSPENSION SEAT

**STARTING AT \$360.04/Mo¹¹
OR SAVE UP TO \$6,900¹²**

1. Payments of \$225.56 per month on new Toro 74002 ZMaster 4000 52" based on sales price of \$10,399.00 at \$0 down, 1.99% A.P.R. for 48 months. Financing available from Sheffield Financial, a division of Trust Bank, member FDIC. Subject to credit approval. Approval, and any rates and terms provided, are based on credit worthiness. Payments do not include implements, freight, delivery, or taxes where applicable. Some exceptions apply. Offer expires 5/31/24. See dealership for details. Dealer Participation Required. 2. Discount of \$3,500 on new Toro 74002 ZMaster 4000 52" based on cash sales price of \$9,599. Discount may not be used in conjunction with financing offers. Prices and availability subject to change without notice. See dealer for details. 3. Payments of \$251.59 per month on new Toro 74004 ZMaster 4000 60" based on sales price of \$11,599.00 at \$0 down, 1.99% A.P.R. for 48 months. Financing available from Sheffield Financial, a division of Trust Bank, member FDIC. Subject to credit approval. Approval, and any rates and terms provided, are based on credit worthiness. Payments do not include implements, freight, delivery, or taxes where applicable. Some exceptions apply. Offer expires 5/31/24. See dealership for details. Dealer Participation Required. 4. Discount of \$3,000 on new Toro 74004 ZMaster 4000 60" based on cash sales price of \$10,699. Discount may not be used in conjunction with financing offers. Prices and availability subject to change without notice. See dealer for details. 5. Payments of \$223.39 per month on new Toro 74054 ZMaster 4000 60" based on sales price of \$10,299.00 at \$0 down, 1.99% A.P.R. for 48 months. Financing available from Sheffield Financial, a division of Trust Bank, member FDIC. Subject to credit approval. Approval, and any rates and terms provided, are based on credit worthiness. Payments do not include implements, freight, delivery, or taxes where applicable. Some exceptions apply. Offer expires 5/31/24. See dealership for details. Dealer Participation Required. 6. Discount of \$4,300 on new Toro 74054 ZMaster 4000 60" based on cash sales price of \$9,499. Discount may not be used in conjunction with financing offers. Prices and availability subject to change without notice. See dealer for details. 7. Payments of \$260.27 per month on new Toro 74020 ZMaster 4000 60" based on sales price of \$11,599.00 at \$0 down, 1.99% A.P.R. for 48 months. Financing available from Sheffield Financial, a division of Trust Bank, member FDIC. Subject to credit approval. Approval, and any rates and terms provided, are based on credit worthiness. Payments do not include implements, freight, delivery, or taxes where applicable. Some exceptions apply. Offer expires 5/31/24. See dealership for details. Dealer Participation Required. 8. Discount of \$4,900 on new Toro 74020 ZMaster 4000 60" based on cash sales price of \$10,599. Discount may not be used in conjunction with financing offers. Prices and availability subject to change without notice. See dealer for details. 9. Payments of \$314.49 per month on new Toro 72911 ZMaster 5000 60" based on sales price of \$14,499.00 at \$0 down, 1.99% A.P.R. for 48 months. Financing available from Sheffield Financial, a division of Trust Bank, member FDIC. Subject to credit approval. Approval, and any rates and terms provided, are based on credit worthiness. Payments do not include implements, freight, delivery, or taxes where applicable. Some exceptions apply. Offer expires 5/31/24. See dealership for details. Dealer Participation Required. 10. Discount of \$6,000 on new Toro 72911 ZMaster 5000 60" based on cash sales price of \$13,399. Discount may not be used in conjunction with financing offers. Prices and availability subject to change without notice. See dealer for details. 11. Payments of \$360.04 per month on new Toro 72961 ZMaster 6000 72" based on sales price of \$16,599.00 at \$0 down, 1.99% A.P.R. for 48 months. Financing available from Sheffield Financial, a division of Trust Bank, member FDIC. Subject to credit approval. Approval, and any rates and terms provided, are based on credit worthiness. Payments do not include implements, freight, delivery, or taxes where applicable. Some exceptions apply. Offer expires 5/31/24. See dealership for details. Dealer Participation Required. 12. Discount of \$6,900 on new Toro 72961 ZMaster 6000 72" based on cash sales price of \$15,299. Discount may not be used in conjunction with financing offers. Prices and availability subject to change without notice. See dealer for details.

TORO®

TORO®

MINI LOADERS



72504 GRANDSTAND

- 48" TURBO FORCE® DECK
- 22 HP KAWASAKI® ENGINE
- CONVERTS TO A WALK-BEHIND

**STARTING AT \$245.08/Mo¹³
OR SAVE UP TO \$2,800¹⁴**



72513 GRANDSTAND

- 60" TURBO FORCE® DECK
- 25 HP KOHLER® EFI ENGINE
- CONVERTS TO A WALK-BEHIND

**STARTING AT \$277.62/Mo¹⁵
OR SAVE UP TO \$3,300¹⁶**



72524 GRANDSTAND MULTIFORCE

- 60" TURBO FORCE® DECK
- 26.5 HP KOHLER® EFI ENGINE

**STARTING AT \$329.68/Mo¹⁷
OR SAVE UP TO \$4,500¹⁸**



74312 DIRECT COLLECT 8000

- 48" DECK
- 23 HP KOHLER ENGINE

**STARTING AT \$444.64/Mo¹⁹
OR SAVE UP TO \$2,800²⁰**



22351 TX700 Narrow Track Diesel Dingo

- Includes Bucket

**STARTING AT \$734.86/Mo²¹
OR SAVE UP TO \$7,800²²**



22327 TX1000 Narrow Track Diesel Dingo

- Includes Bucket

**STARTING AT \$754.10/Mo²³
OR SAVE UP TO \$10,500²⁴**

conjunction with financing offers. Prices and availability subject to change without notice. See dealer for details. 13. Payments of \$245.08 per month on new Toro 72504 GrandStand 48" based on sales price of \$11,299.00 at \$0 down, 1.99% APR for 48 months. Financing available from Sheffield Financial, a division of Trust Bank, member FDIC. Subject to credit approval. Approval, and any rates and terms provided, are based on credit worthiness. Payments do not include implements, freight, delivery, or taxes where applicable. Some exceptions apply. Offer expires 5/31/24. See dealership for details. Dealer Participation Required. 14. Discount of \$2,800 on new Toro 72504 GrandStand 48" based on cash sales price of \$10,399. Discount may not be used in conjunction with financing offers. Prices and availability subject to change without notice. See dealer for details. 15. Payments of \$277.62 per month on new Toro 72513 GrandStand 60" based on sales price of \$12,799.00 at \$0 down, 1.99% APR for 48 months. Financing available from Sheffield Financial, a division of Trust Bank, member FDIC. Subject to credit approval. Approval, and any rates and terms provided, are based on credit worthiness. Payments do not include implements, freight, delivery, or taxes where applicable. Some exceptions apply. Offer expires 5/31/24. See dealership for details. Dealer Participation Required. 16. Discount of \$3,300 on new Toro 72513 GrandStand 60" based on cash sales price of \$11,799. Discount may not be used in conjunction with financing offers. Prices and availability subject to change without notice. See dealer for details. 17. Payments of \$329.68 per month on new Toro 72524 Multiforce 60" based on sales price of \$15,199.00 at \$0 down, 1.99% APR for 48 months. Financing available from Sheffield Financial, a division of Trust Bank, member FDIC. Subject to credit approval. Approval, and any rates and terms provided, are based on credit worthiness. Payments do not include implements, freight, delivery, or taxes where applicable. Some exceptions apply. Offer expires 5/31/24. See dealership for details. Dealer Participation Required. 18. Discount of \$4,500 on new Toro 72524 Multiforce 60" based on cash sales price of \$13,999. Discount may not be used in conjunction with financing offers. Prices and availability subject to change without notice. See dealer for details. 19. Payments of \$444.64 per month on new Toro 74312 Direct Collect 8000 48" based on sales price of \$20,499.00 at \$0 down, 1.99% APR for 48 months. Financing available from Sheffield Financial, a division of Trust Bank, member FDIC. Subject to credit approval. Approval, and any rates and terms provided, are based on credit worthiness. Payments do not include implements, freight, delivery, or taxes where applicable. Some exceptions apply. Offer expires 5/31/24. See dealership for details. Dealer Participation Required. 20. Discount of \$2,800 on new Toro 74312 Direct Collect 8000 48" based on cash sales price of \$18,899. Discount may not be used in conjunction with financing offers. Prices and availability subject to change without notice. See dealer for details. 21. Payments of \$734.86 per month on new Toro 22351 TX700 Dingo w/ bucket based on sales price of \$38,950.00 at \$0 down, 4.99% APR for 60 months. Financing available from Sheffield Financial, a division of Trust Bank, member FDIC. Subject to credit approval. Approval, and any rates and terms provided, are based on credit worthiness. Payments do not include implements, freight, delivery, or taxes where applicable. Some exceptions apply. Offer expires 5/31/24. See dealership for details. Dealer Participation Required. 22. Discount of \$7,800 on new Toro 22351 TX700 Dingo w/ bucket based on cash sales price of \$36,150. Discount may not be used in conjunction with financing offers. Prices and availability subject to change without notice. See dealer for details. 23. Payments of \$754.10 per month on new Toro 22327 TX1000 Dingo w/ bucket based on sales price of \$39,970.00 at \$0 down, 4.99% APR for 60 months. Financing available from Sheffield Financial, a division of Trust Bank, member FDIC. Subject to credit approval. Approval, and any rates and terms provided, are based on credit worthiness. Payments do not include implements, freight, delivery, or taxes where applicable. Some exceptions apply. Offer expires 5/31/24. See dealership for details. Dealer Participation Required. 24. Discount of \$10,500 on new Toro 22327 TX1000 Dingo w/ bucket based on cash sales price of \$37,070. Discount may not be used in conjunction with financing offers. Prices and availability subject to change without notice. See dealer for details. **All finance rates and final pricing will be established at the time of delivery. KDM-24-150725-1

Z-SERIES ZERO TURNS



Z242KW-48

- 21.5 Gross HP,[†] Gasoline Engine
- 48" Welded Mower Deck

**STARTING AT \$119.14/Mo¹
OR SAVE UP TO \$700²**



Z252KW-54

- 24 Gross HP,[†] Gasoline Engine
- 54" Welded Mower Deck

**STARTING AT \$129.66/Mo³
OR SAVE UP TO \$1,000⁴**



Z422KW-54

- 24 Gross HP,[†] 2-Cylinder Gasoline Engine
- Steel Welded 54" Mower Deck

**STARTING AT \$152.44/Mo⁵
OR SAVE UP TO \$1,000⁶**



SZ26NC-52-2

- 26 Max Engine HP,[†] Gasoline Engine
- 52" Mower Deck • Ergonomic Cushion Pad

**STARTING AT \$208.37/Mo⁷
OR SAVE UP TO \$1,200⁸**



Z726XKW-3-60

- 25.5 Gross HP,[†] V-Twin Gasoline Engine
- 60" Commercial Mower Deck

**STARTING AT \$201.65/Mo⁹
OR SAVE UP TO \$1,300¹⁰**



ZD1211L-3-72

- 24.8 Gross HP,[†] 3-Cyl. Kubota Diesel Engine
- 72" Kubota PRO Deck • Clean-Cut Blades

**STARTING AT \$336.65/Mo¹¹
OR SAVE UP TO \$1,100¹²**

ASK US ABOUT 0% FINANCING ON SELECT KUBOTA MODELS!*

1. Payments of \$119.14 per month on new Z242KW-48 based on sales price of \$6,799.00 at \$0 down, 1.99% A.P.R. for 60 months. Financing available from Kubota Credit Corporation, U.S.A.; subject to credit approval. Payments do not include implements, freight, delivery, or taxes where applicable. Some exceptions apply. Offer expires 3/31/24. See dealership for details. 2. Discount of \$700 on new Z242KW-48 based on cash sales price of \$6,699. Discount may not be used in conjunction with financing offers. Prices and availability subject to change without notice. See dealer for details. 3. Payments of \$129.66 per month on new Z252KW-54 based on sales price of \$7,399.00 at \$0 down, 1.99% A.P.R. for 60 months. Financing available from Kubota Credit Corporation, U.S.A.; subject to credit approval. Payments do not include implements, freight, delivery, or taxes where applicable. Some exceptions apply. Offer expires 3/31/24. See dealership for details. 4. Discount of \$1,000 on new Z252KW-54 based on cash sales price of \$7,299. Discount may not be used in conjunction with financing offers. Prices and availability subject to change without notice. See dealer for details. 5. Payments of \$152.44 per month on new Z422KW-54 based on sales price of \$8,599.00 at \$0 down, 1.99% A.P.R. for 60 months. Financing available from Kubota Credit Corporation, U.S.A.; subject to credit approval. Payments do not include implements, freight, delivery, or taxes where applicable. Some exceptions apply. Offer expires 3/31/24. See dealership for details. 6. Discount of \$1,000 on new Z422KW-54 based on cash sales price of \$8,299. Discount may not be used in conjunction with financing offers. Prices and availability subject to change without notice. See dealer for details. 7. Payments of \$208.37 per month on new SZ26NC-52-2 based on sales price of \$11,599.00 at \$0 down, 2.99% A.P.R. for 60 months. Financing available from Kubota Credit Corporation, U.S.A.; subject to credit approval. Payments do not include implements, freight, delivery, or taxes where applicable. Some exceptions apply. Offer expires 3/31/24. See dealership for details. 8. Discount of \$1,200 on new SZ26NC-52-2 based on cash sales price of \$11,299. Discount may not be used in conjunction with financing offers. Prices and availability subject to change without notice. See dealer for details. 9. Payments of \$201.65 per month on new Z726XKW-3-60 based on sales price of \$11,599. Discount may not be used in conjunction with financing offers. Prices and availability subject to change without notice. See dealer for details. 10. Discount of \$1,300 on new Z726XKW-3-60 based on cash sales price of \$11,599. Discount may not be used in conjunction with financing offers. Prices and availability subject to change without notice. See dealer for details. 11. Payments of \$336.65 per month on new ZD1211L-3-72 based on sales price of \$20,199.00 at \$0 down, 0% A.P.R. for 60 months. Financing available from Kubota Credit Corporation, U.S.A.; subject to credit approval. Payments do not include implements, freight, delivery, or taxes where applicable. Some exceptions apply. Offer expires 3/31/24. See dealership for details. 12. Discount of \$1,100 on new ZD1211L-3-72 based on cash sales price of \$19,899. Discount may not be used in conjunction with financ-

BX-SERIES

#1 Selling Sub-Compact
Tractor In The USA††



Kubota®



BX1880V-1

w/ Turf Tires & RCK54-23BX Mower

- 16.6 Gr. HP,† 3-Cyl. Kubota Diesel Engine
- 4WD • Category I, 3-Point Hitch

STARTING AT \$180.21/Mo¹³
OR SAVE UP TO \$650¹⁴



BX2380RV60-1

w/ LA344S & 60" Mower

- 21.6 Gross HP,† 3-Cyl. Kubota Diesel Engine
- 4WD • Category I, 3-Point Hitch

STARTING AT \$267.87/Mo¹⁵
OR SAVE UP TO \$1,600¹⁶



BX2680V-1

w/ LA344S Loader & RCK54-23BX Mower

- 24.8 Gross HP,† 3-Cyl. Kubota Diesel Engine
- Category I, 3-Point Hitch

STARTING AT \$282.31/Mo¹⁷
OR SAVE UP TO \$2,700¹⁸



BX23SLSB-R-1

w/ BT2416 16" Backhoe Bucket

- 21.6 Gross HP,† 3-Cyl. Kubota Diesel Engine
- Fully Integrated Tractor/Loader/Backhoe

STARTING AT \$304.59/Mo¹⁹
OR SAVE UP TO \$2,250²⁰

GET PEACE-OF-MIND WITH AFFORDABLE KUBOTA INSURANCE!

ing offers. Prices and availability subject to change without notice. See dealer for details. 13. Payments of \$180.21 per month on new BX1880V-1 based on sales price of \$14,120.00 at \$0 down, 1.99% A.P.R. for 84 months. Financing available from Kubota Credit Corporation, U.S.A.; subject to credit approval. Payments do not include implements, freight, delivery, or taxes where applicable. Some exceptions apply. Offer expires 6/30/24. See dealership for details. 14. Discount of \$650 on new BX1880V-1 based on cash sales price of \$13,620. Discount may not be used in conjunction with financing offers. Prices and availability subject to change without notice. See dealer for details. 15. Payments of \$267.87 per month on new BX2380RV60-1 w/ loader based on sales price of \$20,988.00 at \$0 down, 1.99% A.P.R. for 84 months. Financing available from Kubota Credit Corporation, U.S.A.; subject to credit approval. Payments do not include implements, freight, delivery, or taxes where applicable. Some exceptions apply. Offer expires 6/30/24. See dealership for details. 16. Discount of \$1,600 on new BX2380RV60-1 w/ loader based on cash sales price of \$20,488. Discount may not be used in conjunction with financing offers. Prices and availability subject to change without notice. See dealer for details. 17. Payments of \$282.31 per month on new BX2680V-1 w/ loader based on sales price of \$22,019.00 at \$0 down, 1.99% A.P.R. for 84 months. Financing available from Kubota Credit Corporation, U.S.A.; subject to credit approval. Payments do not include implements, freight, delivery, or taxes where applicable. Some exceptions apply. Offer expires 6/30/24. See dealership for details. 18. Discount of \$2,700 on new BX2680V-1 w/ loader based on cash sales price of \$21,519. Discount may not be used in conjunction with financing offers. Prices and availability subject to change without notice. See dealer for details. 19. Payments of \$304.59 per month on new BX23SLSB-R-1 based on sales price of \$23,865.00 at \$0 down, 1.99% A.P.R. for 84 months. Financing available from Kubota Credit Corporation, U.S.A.; subject to credit approval. Payments do not include implements, freight, delivery, or taxes where applicable. Some exceptions apply. Offer expires 6/30/24. See dealership for details. 20. Discount of \$2,250 on new BX23SLSB-R-1 based on cash sales price of \$22,865. Discount may not be used in conjunction with financing offers. Prices and availability subject to change without notice. See dealer for details. *0% APR financing available on select Kubota models. Cannot be combined with customer discount offers. See dealer for details. **All finance rates and final pricing will be established at the time of delivery. † For complete warranty, safety and product information, consult your local Kubota dealer and the product operator's manual. Power (HP/KW) and other specifications are based on various standards or recommended practices. KDM-24-150725-1

**EXTEND YOUR
WARRANTY WITH**



B-SERIES & LX-SERIES

Powerful Compact Tractors



B2601HSD-1

w/ R4 Tires, LA435 Loader, B1617 QA,
B2371 54" Bucket & B2373 CE

- 25.5 Gross HP,† 3-Cyl. Kubota Diesel Engine
- Performance-Matched Implements Available

STARTING AT \$318.60/MO¹

OR SAVE UP TO \$325²



LX2610HSD

w/ R14 Tires, LA535 Loader, B2372 Bucket,
RCK60-30BB Mower, B2386 Swift Tach
& B7368 3rd Function

- 24.8 Gross HP,† 3-Cyl. Kubota Diesel Engine
- Standard Rear & Mid PTO

STARTING AT \$388.03/MO⁵

OR SAVE UP TO \$2,900⁶



LX2610SUHSD

w/ R14 Tires, LA535 Loader, B2372 60" Bucket
B2386 Swift Tach & B7368 3rd Function

- 24.8 Gross HP,† 3-Cyl. Kubota Diesel Engine
- 3-Range Hydrostatic (HST) Transmission

STARTING AT \$334.72/MO³

OR SAVE UP TO \$2,300⁴



LX3310HSD

w/ R14 Tires, LA535 Loader, B2372 Bucket,
RCK60-30BB Mower, B2386 Swift Tach
& B7368 3rd Function

- 30.8 Gross HP,† 3-Cyl. Kubota Diesel Engine
- Standard Rear & Mid PTO

STARTING AT \$449.95/MO⁷

OR SAVE UP TO \$2,700⁸

ASK US ABOUT 0% FINANCING ON SELECT KUBOTA MODELS!*

1. Payments of \$318.60 per month on new B2601HSD-1 w/ loader based on sales price of \$24,120.00 at \$0 down, 2.99% A.P.R. for 84 months. Financing available from Kubota Credit Corporation, U.S.A.; subject to credit approval. Payments do not include implements, freight, delivery, or taxes where applicable. Some exceptions apply. Offer expires 6/30/24. See dealership for details. 2. Discount of \$325 on new B2601HSD-1 w/ loader based on cash sales price of \$23,620. Discount may not be used in conjunction with financing offers. Prices and availability subject to change without notice. 3. Payments of \$334.72 per month on new LX2610SUHSD w/ loader based on sales price of \$26,226.00 at \$0 down, 1.99% A.P.R. for 84 months. Financing available from Kubota Credit Corporation, U.S.A.; subject to credit approval. Payments do not include implements, freight, delivery, or taxes where applicable. Some exceptions apply. Offer expires 6/30/24. See dealership for details. 4. Discount of \$2,300 on new LX2610SUHSD w/ loader based on cash sales price of \$25,226. Discount may not be used in conjunction with financing offers. Prices and availability subject to change without notice. See dealer for details. 5. Payments of \$388.03 per month on new LX2610HSD w/ loader based on sales price of \$30,403.00 at \$0 down, 1.99% A.P.R. for 84 months. Financing available from Kubota Credit Corporation, U.S.A.; subject to credit approval. Payments do not include implements, freight, delivery, or taxes where applicable. Some exceptions apply. Offer expires 6/30/24. See dealership for details. 6. Discount of \$2,900 on new LX2610HSD w/ loader based on cash sales price of \$29,403. Discount may not be used in conjunction with financing offers. Prices and availability subject to change without notice. See dealer for details. 7. Payments of \$449.95 per month on new LX3310HSD w/ loader based on sales price of \$35,254.00 at \$0 down, 1.99% A.P.R. for 84 months. Financing available from Kubota Credit Corporation, U.S.A.; subject to credit approval. Payments do not include implements, freight, delivery, or taxes where applicable. Some exceptions apply. Offer expires 6/30/24. See dealership for details. 8. Discount of \$2,700 on new LX3310HSD w/ loader based on cash sales price of \$34,254. Discount may not be used in conjunction with financing offers. Prices and availability subject to change without notice. See dealer for details. 9. Payments of \$313.05 per month on new L2501HST w/ loader based on sales price of \$24,528.00 at \$0 down, 1.99% A.P.R. for 84 months. Financing available from Kubota Credit Corporation, U.S.A.; subject to credit approval. Payments do not include implements, freight, delivery, or taxes where applicable. Some exceptions apply. Offer expires 6/30/24. See dealership for details. 10. Discount of \$4,100 on new L2501HST w/ loader based on cash sales price of \$22,778. Discount may not be used in conjunction with financing offers. Prices and availability subject to change without notice. See dealer for details. 11. Payments of \$375.28 per month on new L3302HST w/ loader based on sales price of \$29,404.00 at \$0 down, 1.99% A.P.R. for 84 months. Financing available from Kubota Credit Corporation, U.S.A.; subject to credit approval. Payments do not include implements, freight, delivery, or taxes where applicable. Some exceptions apply. Offer expires 6/30/24. See dealership for details. 12. Discount of \$4,000 on new

L-SERIES

#1 Selling Compact
Tractor Brand**



L2501HST

w/ LA526 Loader, L2248 Bucket & TL1756 CE

- 24.8 Gross HP,† 3-Cyl. Kubota Diesel Engine

STARTING AT \$313.05/MO⁹

OR SAVE UP TO \$4,100¹⁰



L3302HST

w/ LA526 Loader, L2248 Bucket & TL1756 CE

- 33 Gross HP,† 3-Cyl. Kubota Diesel Engine

STARTING AT \$375.28/MO¹¹

OR SAVE UP TO \$4,000¹²



L3560HSTC-LE

w/ LA805 Loader & L2235 Bucket (2023 ONLY)

- 37 Gross HP,† 3-Cyl. Kubota Diesel Engine

STARTING AT \$564.13/MO¹³

OR SAVE UP TO \$1,700¹⁴



L4060HSTC-LE

w/ LA805 Loader & L2235 Bucket

- 42 Gross HP,† 4-Cyl. Kubota Diesel Engine

STARTING AT \$629.66/MO¹⁵

OR SAVE UP TO \$3,000¹⁶



L4701HST

w/ LA765 Loader & L2235A Bucket

- 47.3 Gross HP,† 3-Cyl. Kubota Diesel Engine

STARTING AT \$472.99/MO¹⁷

OR SAVE UP TO \$4,100¹⁸



L6060HSTC

w/ LA1055 Loader, L2296 Bucket & TL1748CE

- 62 Gross HP,† 4-Cyl. Kubota Diesel Engine

STARTING AT \$822.30/MO¹⁹

OR SAVE UP TO \$4,400²⁰

GET PEACE-OF-MIND WITH AFFORDABLE KUBOTA INSURANCE!

L3302HST w/ loader based on cash sales price of \$28,404. Discount may not be used in conjunction with financing offers. Prices and availability subject to change without notice. See dealer for details. 13. Payments of \$564.13 per month on new L3560HSTC-LE w/ loader based on sales price of \$42,709.00 at \$0 down, 2.99% A.P.R. for 84 months. Financing available from Kubota Credit Corporation, U.S.A.; subject to credit approval. Payments do not include implements, freight, delivery, or taxes where applicable. Some exceptions apply. Offer expires 6/30/24. See dealership for details. 14. Discount of \$1,700 on new L3560HSTC-LE w/ loader based on cash sales price of \$41,709. Discount may not be used in conjunction with financing offers. Prices and availability subject to change without notice. See dealer for details. 15. Payments of \$629.66 per month on new L4060HSTC-LE w/ loader based on sales price of \$47,607.00 at \$0 down, 2.99% A.P.R. for 84 months. Financing available from Kubota Credit Corporation, U.S.A.; subject to credit approval. Payments do not include implements, freight, delivery, or taxes where applicable. Some exceptions apply. Offer expires 6/30/24. See dealership for details. 16. Discount of \$3,000 on new L4060HSTC-LE w/ loader based on cash sales price of \$46,607. Discount may not be used in conjunction with financing offers. Prices and availability subject to change without notice. See dealer for details. 17. Payments of \$472.99 per month on new L4701HST w/ loader based on sales price of \$35,809.00 at \$0 down, 2.99% A.P.R. for 84 months. Financing available from Kubota Credit Corporation, U.S.A.; subject to credit approval. Payments do not include implements, freight, delivery, or taxes where applicable. Some exceptions apply. Offer expires 6/30/24. See dealership for details. 18. Discount of \$4,100 on new L4701HST w/ loader based on cash sales price of \$34,809. Discount may not be used in conjunction with financing offers. Prices and availability subject to change without notice. See dealer for details. 19. Payments of \$822.30 per month on new L6060HSTC w/ loader based on sales price of \$62,254.00 at \$0 down, 2.99% A.P.R. for 84 months. Financing available from Kubota Credit Corporation, U.S.A.; subject to credit approval. Payments do not include implements, freight, delivery, or taxes where applicable. Some exceptions apply. Offer expires 6/30/24. See dealership for details. 20. Discount of \$4,400 on new L6060HSTC w/ loader based on cash sales price of \$61,254. Discount may not be used in conjunction with financing offers. Prices and availability subject to change without notice. See dealer for details. **All finance rates and final pricing will be established at the time of delivery. † For complete warranty, safety and product information, consult your local Kubota dealer and the product operator's manual. Power (HP/KW) and other specifications are based on various standards or recommended practices. KDM-24-150725-1

**EXTEND YOUR
WARRANTY WITH**



MX-SERIES & M SERIES



MX6000HST

w/ R4 Tires, LA1065A Loader, MX2131 Loader Valve, L2296 Bucket & TL1748 CE

- 63.4 Gross HP,[†] 4-Cyl. Kubota Diesel Engine
- Hydrostatic Transmission (HST)

**STARTING AT \$544.94/Mo¹
OR SAVE UP TO \$4,600²**



MX6000HSTC

w/ R4 Tires, LA1065A Loader, MX2132 Loader Valve, L2296 Bucket & TL1748 CE

- 24.8 Gross HP,[†] 3-Cyl. Kubota Diesel Engine
- Climate-Controlled, Factory-Installed Cab

**STARTING AT \$654.53/Mo³
OR SAVE UP TO \$5,200⁴**



M7060HDC

w/ R1 Tires, Cast Rear Rims, LA1154A Loader, M1811 Bucket & M7996 Loader Valve

- 74.3 Gross HP,[†] 4-Cyl. Kubota Diesel Engine
- Fully Synchronized, Hydraulic Shuttle Transmission

**STARTING AT \$795.87/Mo⁵
OR SAVE UP TO \$6,200⁶**



M4D-071HDC-12

w/ R1 Tires, Cast Rear Rims, LA1154A Loader, M1815 Bucket & M6870 Loader Valve

- 73.2 Gross HP,[†] 4-Cyl. Kubota Diesel Engine
- Deluxe Wide Category II Cab • LED Lights
- Deluxe Operator Seat • 2 Remote Valves

**STARTING AT \$913.82/Mo⁷
OR SAVE UP TO \$6,700⁸**

ASK US ABOUT 0% FINANCING ON SELECT KUBOTA MODELS!*

1. Payments of \$544.94 per month on new MX6000HST w/ loader based on sales price of \$42,697.00 at \$0 down, 1.99% A.P.R. for 84 months. Financing available from Kubota Credit Corporation, U.S.A.; subject to credit approval. Payments do not include implements, freight, delivery, or taxes where applicable. Some exceptions apply. Offer expires 6/30/24. See dealership for details. 2. Discount of \$4,600 on new MX6000HST w/ loader based on cash sales price of \$41,697. Discount may not be used in conjunction with financing offers. Prices and availability subject to change without notice. See dealer for details. 3. Payments of \$654.53 per month on new MX6000HSTC w/ loader based on sales price of \$51,291.00 at \$0 down, 1.99% A.P.R. for 84 months. Financing available from Kubota Credit Corporation, U.S.A.; subject to credit approval. Payments do not include implements, freight, delivery, or taxes where applicable. Some exceptions apply. Offer expires 6/30/24. See dealership for details. 4. Discount of \$5,200 on new MX6000HSTC w/ loader based on cash sales price of \$50,291. Discount may not be used in conjunction with financing offers. Prices and availability subject to change without notice. See dealer for details. 5. Payments of \$795.87 per month on new M7060HDC w/ loader based on sales price of \$60,253.00 at \$0 down, 2.99% A.P.R. for 84 months. Financing available from Kubota Credit Corporation, U.S.A.; subject to credit approval. Payments do not include implements, freight, delivery, or taxes where applicable. Some exceptions apply. Offer expires 6/30/24. See dealership for details. 6. Discount of \$6,200 on new M7060HDC w/ loader based on cash sales price of \$57,253. Discount may not be used in conjunction with financing offers. Prices and availability subject to change without notice. See dealer for details. 7. Payments of \$913.82 per month on new M4D-071HDC-12 w/ loader based on sales price of \$69,183.00 at \$0 down, 2.99% A.P.R. for 84 months. Financing available from Kubota Credit Corporation, U.S.A.; subject to credit approval. Payments do not include implements, freight, delivery, or taxes where applicable. Some exceptions apply. Offer expires 6/30/24. See dealership for details. 8. Discount of \$6,700 on new M4D-071HDC-12 w/ loader based on cash sales price of \$66,183. Discount may not be used in conjunction with financing offers. Prices and availability subject to change without notice. See dealer for details. 9. Payments of \$644.25 per month on new M7060HD w/ loader based on sales price of \$48,774.00 at \$0 down, 2.99% A.P.R. for 84 months. Financing available from Kubota Credit Corporation, U.S.A.; subject to credit approval. Payments do not include implements, freight, delivery, or taxes where applicable. Some exceptions apply. Offer expires 6/30/24. See dealership for details. 10. Discount of \$6,200 on

POULTRY HOUSE & RTV SERIES



M7060HD

w/ R4 Tires, LA1154A Loader, M1811 72"

Bucket & M7995 Loader Valve

- 74.3 Gross HP,† 4-Cyl. Kubota Diesel Engine
- Performance-Matched Implements Available

STARTING AT \$644.25/Mo⁹
OR SAVE UP TO \$6,200¹⁰



M5L-111-SN

w/ MR9856/AMR8523A R1 Tires, M9196

Fenders, M7610 & M7699 Remotes

- 105.8 Gross HP,† 4-Cyl. Kubota Diesel Engine
- Low-Profile, Sloped Steel Hood

STARTING AT \$813.91/Mo¹¹
OR SAVE UP TO \$13,800¹²



RTVXG850WLH24

- Powerful 48.3 HP† Gasoline Engine
- CVT-Plus Transmission
- Selectable Full-Time 4WD
- General Purpose, Worksite & Special Models Available

STARTING AT \$265.88/Mo¹³
OR SAVE UP TO \$1,000¹⁴



RTVX2-PKLH24

- 24.8 HP† 3-Cylinder Diesel Engine
- 1,300 Pound Towing Capacity
- Variable Hydraulic Transmission (VHT-X)
- New LED Headlights
- New Heavy-Duty Tires

STARTING AT \$350.28/Mo¹⁵
OR SAVE UP TO \$300¹⁶

GET PEACE-OF-MIND WITH AFFORDABLE KUBOTA INSURANCE!

new M7060HD w/ loader based on cash sales price of \$45,774. Discount may not be used in conjunction with financing offers. Prices and availability subject to change without notice. See dealer for details. 11. Payments of \$813.91 per month on new M5L-111-SN based on sales price of \$61,619.00 at \$0 down, 2.99% A.P.R. for 84 months. Financing available from Kubota Credit Corporation, U.S.A.; subject to credit approval. Payments do not include implements, freight, delivery, or taxes where applicable. Some exceptions apply. Offer expires 6/30/24. See dealership for details. 12. Discount of \$13,800 on new M5L-111-SN based on cash sales price of \$58,619. Discount may not be used in conjunction with financing offers. Prices and availability subject to change without notice. See dealer for details. 13. Payments of \$265.88 per month on new RTVXG850WLH24 based on sales price of \$16,999.00 at \$0 down, 3.99% A.P.R. for 72 months. Financing available from Kubota Credit Corporation, U.S.A.; subject to credit approval. Payments do not include implements, freight, delivery, or taxes where applicable. Some exceptions apply. Offer expires 3/31/24. See dealership for details. 14. Discount of \$1000 on new RTVXG850WLH24 based on cash sales price of \$15,999. Discount may not be used in conjunction with financing offers. Prices and availability subject to change without notice. See dealer for details. 15. Payments of \$350.28 per month on new RTVX2-PKLH24 based on sales price of \$19,499.00 at \$0 down, 2.99% A.P.R. for 60 months. Financing available from Kubota Credit Corporation, U.S.A.; subject to credit approval. Payments do not include implements, freight, delivery, or taxes where applicable. Some exceptions apply. Offer expires 3/31/24. See dealership for details. 16. Discount of \$300 on new RTVX2-PKLH24 based on cash sales price of \$19,199. Discount may not be used in conjunction with financing offers. Prices and availability subject to change without notice. See dealer for details. *0% APR financing available on select Kubota models. Cannot be combined with customer discount offers. See dealer for details. **All finance rates and final pricing will be established at the time of delivery. † For complete warranty, safety and product information, consult your local Kubota dealer and the product operator's manual. Power (HP/KW) and other specifications are based on various standards or recommended practices. KDM-24-150725-1

**EXTEND YOUR
WARRANTY WITH**



TLB & R-SERIES



B26TLB

w/TL500 Loader, BT820V Backhoe, TL2142 Bkt, TL2143 CE, BT1970 QC & BT1973 Bkt

- 26 Gross HP[†] 3-Cyl. Kubota Diesel Engine
- Infinite 3-Range Transmission (HST)

**STARTING AT \$667.87/Mo¹
OR SAVE UP TO \$2,400²**



R430R3

w/K9716 Hyd QC, K9163A Bkt, K9723 CE & K9931A Counterweight

- 47.6 Gross HP[†] Kubota Diesel Engine
- Hydrostatic Transmission
- Limited Slip Differential

**STARTING AT \$999.97/Mo⁵
OR SAVE UP TO \$10,200⁶**



M62TLB

w/TL1800V Ldr, BT1400V Backhoe, TL3421A Bkt, TL3431A CE, K7543A QC, K7875A Bkt & K7545A Thumb

- 63 Gross HP[†] 4-Cyl. Kubota Diesel Engine

**STARTING AT \$1,239.14/Mo³
OR SAVE UP TO \$2,900⁴**



R640R43

w/K7164 Hyd QC, K7175 Bkt & K7176 CE

- 64.3 Gross HP[†] Kubota Diesel Engine
- Spacious, High Visibility Cab
- Standard LED Working Lights
- Delta Shaped Loader Arms

**STARTING AT \$1,563.83/Mo⁷
OR SAVE UP TO \$15,600⁸**

ASK US ABOUT 0% FINANCING ON SELECT KUBOTA MODELS!*

1. Payments of \$667.87 per month on new B26TLB based on sales price of \$48,877.00 at \$0 down, 3.99% A.P.R. for 84 months. Financing available from Kubota Credit Corporation, U.S.A.; subject to credit approval. Payments do not include implements, freight, delivery, or taxes where applicable. Some exceptions apply. Offer expires 6/30/24. See dealership for details. 2. Discount of \$2,400 on new B26TLB based on cash sales price of \$48,377. Discount may not be used in conjunction with financing offers. Prices and availability subject to change without notice. See dealer for details. 3. Payments of \$1,239.14 per month on new M62TLB based on sales price of \$90,685.00 at \$0 down, 3.99% A.P.R. for 84 months. Financing available from Kubota Credit Corporation, U.S.A.; subject to credit approval. Payments do not include implements, freight, delivery, or taxes where applicable. Some exceptions apply. Offer expires 6/30/24. See dealership for details. 4. Discount of \$2,900 on new M62TLB based on cash sales price of \$89,684. Discount may not be used in conjunction with financing offers. Prices and availability subject to change without notice. See dealer for details. 5. Payments of \$999.97 per month on new R430R3 based on sales price of \$63,934.00 at \$0 down, 3.99% A.P.R. for 72 months. Financing available from Kubota Credit Corporation, U.S.A.; subject to credit approval. Payments do not include implements, freight, delivery, or taxes where applicable. Some exceptions apply. Offer expires 6/30/24. See dealership for details. 6. Discount of \$10,200 on new R430R3 based on cash sales price of \$61,434. Discount may not be used in conjunction with financing offers. Prices and availability subject to change without notice. See dealer for details. 7. Payments of \$1,563.83 per month on new R640R43 based on sales price of \$99,985.00 at \$0 down, 3.99% A.P.R. for 72 months. Financing available from Kubota Credit Corporation, U.S.A.; subject to credit approval. Payments do not include implements, freight, delivery, or taxes where applicable. Some exceptions apply. Offer expires 6/30/24. See dealership for details. 8. Discount of \$15,600 on new R640R43 based on cash sales price of \$95,485. Discount may not be used in conjunction with financing offers. Prices and availability subject to change without notice. See dealer for details. 9. Payments of \$982.38 per month on new SVL65-2HWC based on sales price of \$64,679.00 at \$0 down, 2.99% A.P.R. for 72 months. Financing available from Kubota Credit Corporation, U.S.A.; subject to credit approval. Payments do not include implements, freight, delivery, or taxes where applicable. Some exceptions apply. Offer expires 6/30/24. See dealership for details. 10. Discount of \$11,500 on new SVL65-2HWC based on cash sales price of \$61,676. Discount may not be used in conjunction with financing offers. Prices and availability subject to change without notice. See dealer for details. 11. Payments of \$1,295.27 per month on new SVL75-3HWC based on sales price of \$74,363.00 at \$0 down, 2.99% A.P.R. for 72 months. Financing available from Kubota Credit Corporation, U.S.A.; subject to credit approval. Payments do not include implements, freight, delivery, or taxes where applicable. Some exceptions apply. Offer expires 6/30/24. See dealership for details. 12. Discount of \$13,000 on new SVL75-3HWC based on cash sales price of \$70,863. Discount may not be used in conjunction with financing offers. Prices and availability subject to change without notice. See dealer for details. 13. Payments of \$1,295.27 per month on new SVL97-2HFWC based on sales

SVL & SSV SERIES



Kubota®



SVL65-2HWC

w/AP-HD68LLC Bkt, S6763 Hose Guide & S6641 Mirror

- 68.3 Gross HP,† 4-Cyl. Kubota Diesel Engine

STARTING AT \$982.38/Mo⁹

OR SAVE UP TO \$11,500¹⁰



SVL97-2HFWC

w/S6606 Bkt, S6673 Hose Guide, S6641

Mirror & Telematics

- 96.4 Gross HP,† 4-Cyl. Kubota Diesel Engine

STARTING AT \$1,295.27/Mo¹³

OR SAVE UP TO \$14,900¹⁴



SSV65PHC

w/AP-HD68LLC Bkt, S6763 Hose Guide

- 64 Gross HP,† 4-Cyl. Turbo Kubota Diesel Engine

STARTING AT \$806.79/Mo¹⁷

OR SAVE UP TO \$8,200¹⁸



SVL75-3HWC

w/AP-HD74LLC Bkt, S6763 Hose Guide & Telematics

- 74.3 Gross HP,† 4-Cyl. Kubota Diesel Engine

STARTING AT \$1,129.51/Mo¹¹

OR SAVE UP TO \$13,000¹²



SVL97-2HC

w/S6606 Bkt, S6763 Hose Guide

& S6641 Mirror and Telematics.

- 96.4 Gross HP,† Turbo Kubota Diesel Engine

STARTING AT \$1,251.06/Mo¹⁵

OR SAVE UP TO \$14,700¹⁶



SSV75PHC

w/AP-HD74LLC Bkt, & S6763 Hose Guide

- 74.3 Gross HP,† 4-Cyl. Turbo Kubota Diesel Engine

STARTING AT \$909.31/Mo¹⁹

OR SAVE UP TO \$10,000²⁰

GET PEACE-OF-MIND WITH AFFORDABLE KUBOTA INSURANCE!

price of \$85,276.00 at \$0 down, 2.99% A.P.R. for 72 months. Financing available from Kubota Credit Corporation, U.S.A.; subject to credit approval. Payments do not include implements, freight, delivery, or taxes where applicable. Some exceptions apply. Offer expires 6/30/24. See dealership for details. 14. Payments of \$1,295.27 per month on new SVL97-2HFWC based on sales price of \$85,276.00 at \$0 down, 2.99% A.P.R. for 72 months. Financing available from Kubota Credit Corporation, U.S.A.; subject to credit approval. Payments do not include implements, freight, delivery, or taxes where applicable. Some exceptions apply. Offer expires 6/30/24. See dealership for details. 15. Payments of \$1,251.06 per month on new SVL97-2HC based on sales price of \$82,365.00 at \$0 down, 2.99% A.P.R. for 72 months. Financing available from Kubota Credit Corporation, U.S.A.; subject to credit approval. Payments do not include implements, freight, delivery, or taxes where applicable. Some exceptions apply. Offer expires 6/30/24. See dealership for details. 16. Payments of \$1,251.06 per month on new SVL97-2HC based on sales price of \$82,365.00 at \$0 down, 2.99% A.P.R. for 72 months. Financing available from Kubota Credit Corporation, U.S.A.; subject to credit approval. Payments do not include implements, freight, delivery, or taxes where applicable. Some exceptions apply. Offer expires 6/30/24. See dealership for details. 17. Payments of \$806.79 per month on new SSV65PHC based on sales price of \$51,583.00 at \$0 down, 3.99% A.P.R. for 72 months. Financing available from Kubota Credit Corporation, U.S.A.; subject to credit approval. Payments do not include implements, freight, delivery, or taxes where applicable. Some exceptions apply. Offer expires 6/30/24. See dealership for details. 18. Payments of \$806.79 per month on new SSV65PHC based on sales price of \$51,583.00 at \$0 down, 3.99% A.P.R. for 72 months. Financing available from Kubota Credit Corporation, U.S.A.; subject to credit approval. Payments do not include implements, freight, delivery, or taxes where applicable. Some exceptions apply. Offer expires 6/30/24. See dealership for details. 19. Payments of \$909.31 per month on new SSV75PHC based on sales price of \$58,138.00 at \$0 down, 3.99% A.P.R. for 72 months. Financing available from Kubota Credit Corporation, U.S.A.; subject to credit approval. Payments do not include implements, freight, delivery, or taxes where applicable. Some exceptions apply. Offer expires 6/30/24. See dealership for details. 20. Discount of \$10,000 on new SSV75PHC based on cash sales price of \$55,138. Discount may not be used in conjunction with financing offers. Prices and availability subject to change without notice. See dealer for details. *0% APR financing available on select Kubota models. Cannot be combined with customer discount offers. See dealer for details. **All finance rates and final pricing will be established at the time of delivery. † For complete warranty, safety and product information, consult your local Kubota dealer and the product operator's manual. Power (HP/KW) and other specifications are based on various standards or recommended practices. KDM-24-150725-1

**EXTEND YOUR
WARRANTY WITH**



KX & U-SERIES

*Easy Maneuvering
Excavators*



K008-5

w/ 12" Pin-On Bucket

- 10.3 Gross HP† 3-Cyl. Kubota Diesel Engine

STARTING AT \$359.97/Mo¹
OR SAVE UP TO \$6,500²



U35-4R1

w/ QC, Thumb & 24" Bucket

- 24.8 Gross HP† Kubota Diesel Engine

STARTING AT \$781.26/Mo⁵
OR SAVE UP TO \$8,800⁶



KX057-5R3AP

w/ QC, Thumb & 24" Bucket

- 47.6 Gross HP† Kubota Diesel Engine

STARTING AT \$1,366.72/Mo⁹
OR SAVE UP TO \$14,200¹⁰



U27-4R1

w/ QC, Thumb & 18" Bucket

- 20.8 Gross HP† Kubota Diesel Engine

STARTING AT \$614.60/Mo³
OR SAVE UP TO \$5,400⁴



KX040-4R3A

w/ QC, Thumb & 24" Bucket

- 40.4 Gross HP† Kubota Diesel Engine

STARTING AT \$1,076.64/Mo⁷
OR SAVE UP TO \$11,700⁸



KX080-5R3A

w/ QC, Thumb, 36" Bucket, Rearview Camera & Telematics.

- 66.6 Gross HP† Kubota Diesel Engine

STARTING AT \$1,975.80/Mo¹¹
OR SAVE UP TO \$24,200¹²

ASK US ABOUT 0% FINANCING ON SELECT KUBOTA MODELS!*

1. Payments of \$359.97 per month on new K008-5 based on sales price of \$23,699.00 at \$0 down, 2.99% A.P.R. for 72 months. Financing available from Kubota Credit Corporation, U.S.A.; subject to credit approval. Payments do not include implements, freight, delivery, or taxes where applicable. Some exceptions apply. Offer expires 6/30/24. See dealership for details. 2. Discount of \$6,500 on new KX008-5 based on cash sales price of \$22,699. Discount may not be used in conjunction with financing offers. Prices and availability subject to change without notice. See dealer for details. 3. Payments of \$614.60 per month on new U27-4R1 based on sales price of \$41,643.00 at \$0 down, 2.99% A.P.R. for 72 months. Financing available from Kubota Credit Corporation, U.S.A.; subject to credit approval. Payments do not include implements, freight, delivery, or taxes where applicable. Some exceptions apply. Offer expires 6/30/24. See dealership for details. 4. Discount of \$5,400 on new U27-4R1 based on cash sales price of \$39,663. Discount may not be used in conjunction with financing offers. Prices and availability subject to change without notice. See dealer for details. 5. Payments of \$781.26 per month on new U35-4R1 based on sales price of \$53,135.00 at \$0 down, 2.99% A.P.R. for 72 months. Financing available from Kubota Credit Corporation, U.S.A.; subject to credit approval. Payments do not include implements, freight, delivery, or taxes where applicable. Some exceptions apply. Offer expires 6/30/24. See dealership for details. 6. Discount of \$8,800 on new U35-4R1 based on cash sales price of \$50,835. Discount may not be used in conjunction with financing offers. Prices and availability subject to change without notice. See dealer for details. 7. Payments of \$1,076.64 per month on new KX040-4R3A based on sales price of \$70,882.00 at \$0 down, 2.99% A.P.R. for 72 months. Financing available from Kubota Credit Corporation, U.S.A.; subject to credit approval. Payments do not include implements, freight, delivery, or taxes where applicable. Some exceptions apply. Offer expires 6/30/24. See dealership for details. 8. Discount of \$11,700 on new KX040-4R3A based on cash sales price of \$67,882. Discount may not be used in conjunction with financing offers. Prices and availability subject to change without notice. See dealer for details. 9. Payments of \$1,366.72 per month on new KX057-5R3AP based on sales price of \$89,980.00 at \$0 down, 2.99% A.P.R. for 72 months. Financing available from Kubota Credit Corporation, U.S.A.; subject to credit approval. Payments do not include implements, freight, delivery, or taxes where applicable. Some exceptions apply. Offer expires 6/30/24. See dealership for details. 10. Discount of \$14,200 on new KX057-5R3AP based on cash sales price of \$85,980. Discount may not be used in conjunction with financing offers. Prices and availability subject to change without notice. See dealer for details. 11. Payments of \$1,975.80 per month on new KX080-5R3A based on sales price of \$130,079.00 at \$0 down, 2.99% A.P.R. for 72 months. Financing available from Kubota Credit Corporation, U.S.A.; subject to credit approval. Payments do not include implements, freight, delivery, or taxes where applicable. Some exceptions apply. Offer expires 6/30/24. See dealership for details. 12. Discount of \$24,200 on new KX080-5R3A based on cash sales price of \$124,079. Discount may not be used in conjunction with financing offers. Prices and availability subject to change without notice. See dealer for details. *0% APR financing available on select Kubota models. Cannot be combined with customer discount offers. See dealer for details. **All finance rates and final pricing will be established at the time of delivery. † For complete warranty, safety and product information, consult your local Kubota dealer and the product operator's manual. Power (HP/KW) and other specifications are based on various standards or recommended practices. KDM-24-150725-1

SALES • SERVICE • RENTALS • PARTS



Newark, DE

2063 Pulaski Highway
Route 40
302.365.6000

Felton, DE

54 Andrews Lake Rd
Route 13
302.284.0123

Delmar, DE

11196 E. Snake Rd.
Route 13
302.248.7070



Like us on
Social Media!

STORE HOURS:

Mon–Fri: 8–5
Saturday: 8–Noon
(March–October)



COME JOIN US AT THE
DELAWARE STATE FAIR

JULY 18-27, 2024

CUSTOMER APPRECIATION WEEK WITH FREE GIVEAWAYS!